

Certificate of Quality

LOT #: 20260530

Product description: RosetteArray plate

- Clear 96-well
- 250 μ m diameter circular micropattern array

The following inspections were carried out and passed:

Visual inspection of each micropattern surface and plate upon assembly.

One plate out of the batch, chosen at random, displayed restriction of cell adherence 7 days after cell seeding for 60 out of 60 of the interior wells.

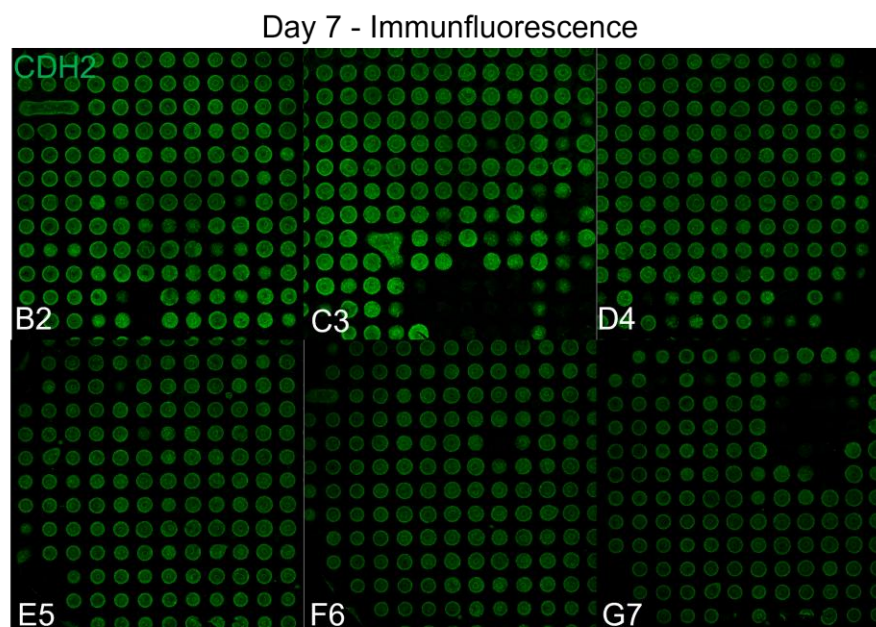


Fig. 1. Plate from Batch 20260530 seeded with WA09 hESCs @ 150K cells/cm² on Day -1 and imaged at Day 7, exhibited >75% single rosette emergence across the 6 selected wells.

Date: 06-17-2026

Signature: GK